

# Red Hat Enterprise Linux Software Certification

## Benefits

- Major enhancements of the industry-leading Linux that customers choose.
- Easy configuration for Windows users and Linux beginners.
- Faster times to developer productivity.
- New and frequently updated open source tools, including languages, runtimes, databases, and web servers. Applications Streams allows installation with a single command.
- New container development tools provide an easier transition to containerized workloads with [Buildah](#), [Podman](#), [Skopeo](#), and CRI-O.
- Dozens of open source programming languages, compilers, web tools, databases—packaged as both RPMs and container images.



facebook.com/redhatinc  
@redhatnews  
linkedin.com/company/red-hat

redhat.com

## Introduction

To help meet the demands of today's enterprise customers, Red Hat offers a certification for software vendor's non-containerized applications on the Red Hat® Enterprise Linux® 8 hybrid cloud platform. Building and certifying your application on Red Hat Enterprise Linux is a recommended practice and can be an important differentiator for your product and company.

## Red Hat Enterprise Linux 8

Red Hat Enterprise Linux is the industry-leading Linux, providing the foundation for next-generation architectures, with support for all major hardware platforms and thousands of commercial and custom applications. And it is the foundation for Red Hat OpenShift® and Red Hat OpenStack®.

Red Hat Enterprise Linux 8 is the intelligent operating system for hybrid cloud. Modern IT is hybrid IT. But turning a sprawling ecosystem—from traditional datacenters to public cloud services—into a true hybrid environment requires a few things. Scaling as needed. Moving workloads seamlessly. Developing and managing applications that run anywhere. Red Hat Enterprise Linux 8 makes this all possible. And now it includes predictive analytics and remediation with the availability of Red Hat Insights for all active subscriptions.

## Certify your software on Red Hat Enterprise Linux 8

Red Hat Enterprise Linux Software Certification is a simple self-service offering, featuring a downloadable test suite\*, to certify that a software vendor's commercial application interoperates with the Red Hat Enterprise Linux platform, in a secure manner, with best practices, and covered by collaborative support.

When you certify your application, a technical determination is made to confirm that best practices were used. This provides customer confidence and trust that when your application is deployed correctly on Red Hat Enterprise Linux, it is valid and supported by Red Hat. You also receive a membership with TSANet to ensure a joint supportability commitment.

Once certified, your certified application is listed in the Red Hat ecosystem catalog, which is available to all Red Hat customers.

## Why certify?

### Ensure platform integrity and application compatibility

Red Hat Enterprise Linux Software Certification offers technical verifications of the Red Hat Enterprise Linux platform with the vendor's commercial application in runtime—this helps ensure the integrity and supportability of critical components on Red Hat Enterprise Linux such as the kernel, and Red Hat software packages. For more information on the technical verifications refer to the Red Hat Enterprise Linux application certification [policy guide](#).

*“Our strategic collaboration with Red Hat and our certification of Red Hat Enterprise Linux 8 enables Couchbase to help deliver true hybrid and multicloud deployment flexibility for business-critical applications.”*

**Ravi Mayuram,**  
vice president of engineering, Couchbase

### **Greater market awareness**

In addition to boosting trust in your product, Linux Software Certification gives technology partners access to go-to-market benefits and resources like:

- Publication in the Red Hat ecosystem catalog.
- Rights to use the Red Hat Certified technology logo.
- Qualification for co-branded marketing materials.
- Qualification for joint go-to-market initiatives.

### **Key benefits of Red Hat Enterprise Linux 8**

- Provides on-premise tooling to verify key components of supportability and best practices.
- No financial cost to Red Hat partner—enablement through easily obtained NFR subscription.
- Enables a secure and consistent foundation across all modern deployment models.
- Adds credibility to the enterprise market through technical verifications.
- Provides assurances that come with the establishment of a supportability structure through TSANet.org.
- Certified applications are published and promoted in the Red Hat ecosystem catalog.
- Provides an important foundational step toward enabling and adopting containerized workload.

### **A simple process to certify**

The certification process is designed to be straightforward and requires minimal partner resources and time.

Step 1: Join Partner Connect at [connect.redhat.com](https://connect.redhat.com).

Step 2: Complete the project checklist.

Step 3: Execute test suite and submit the results to Red Hat for review and/or approval.

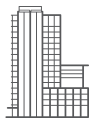
Step 4: Once approved, your certified software application is published in the Red Hat ecosystem catalog. Red Hat will publish the certified application listing to the Red Hat catalog, which reaches a wide range of customer markets showcasing the certified application.

### **Resources**

- Visit [Connect.redhat.com](https://connect.redhat.com) to become a partner and learn about the certification offering.
- Download the Red Hat Enterprise Linux Certification Policy Guide.
- Download the Red Hat Enterprise Linux Certification Workflow Guide.
- Need help building applications on Red Hat Enterprise Linux? Leverage the [Developer Program](#).

---

\* Please note the partner’s application testing including unit test, system test, QA testing, and/or any other testing directly responsible for the quality of the partner’s product is the responsibility of the partner. Direct support of the partner’s application also the partner’s responsibility. Certification test suite tooling does not include explicit or implicit application testing in any manner.



### About Red Hat

Red Hat is the world's leading provider of enterprise open source software solutions, using a community-powered approach to deliver reliable and high-performing Linux, hybrid cloud, container, and Kubernetes technologies. Red Hat helps customers integrate new and existing IT applications, develop cloud-native applications, standardize on our industry-leading operating system, and automate, secure, and manage complex environments. Award-winning support, training, and consulting services make Red Hat a trusted adviser to the Fortune 500. As a strategic partner to cloud providers, system integrators, application vendors, customers, and open source communities, Red Hat can help organizations prepare for the digital future.



facebook.com/redhatinc  
@redhat  
linkedin.com/company/red-hat

**North America**  
1 888 REDHAT1  
www.redhat.com

**Europe, Middle East,  
and Africa**  
00800 7334 2835  
europe@redhat.com

**Asia Pacific**  
+65 6490 4200  
apac@redhat.com

**Latin America**  
+54 11 4329 7300  
info-latam@redhat.com

redhat.com  
#0000000\_0420KVM

Copyright © 2020 Red Hat, Inc. Red Hat, Red Hat Enterprise Linux, the Red Hat logo, and JBoss are trademarks or registered trademarks of Red Hat, Inc. or its subsidiaries in the United States and other countries. Linux® is the registered trademark of Linus Torvalds in the U.S. and other countries.